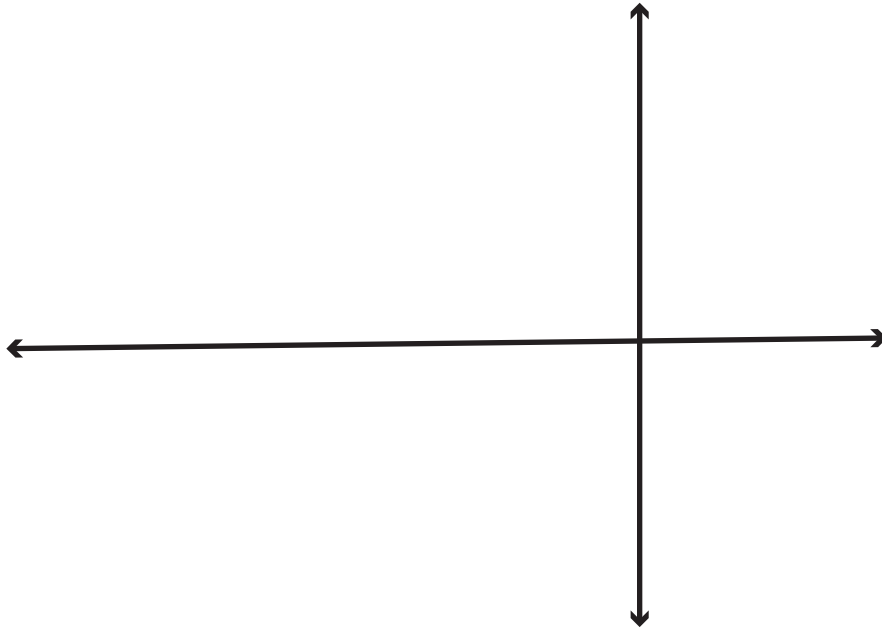


*This pattern is for your personal use only.
Please do tell your friends about our patterns
and encourage them to buy their own copies so we
can continue to create more Fit for Art Patterns.
Copying of this pattern and instruction book
without our permission is prohibited by copyright law.
Thanks for your support!*

Pocket Lining

Cut 2 in Cotton

Placement Line for Pocket Lining Facing



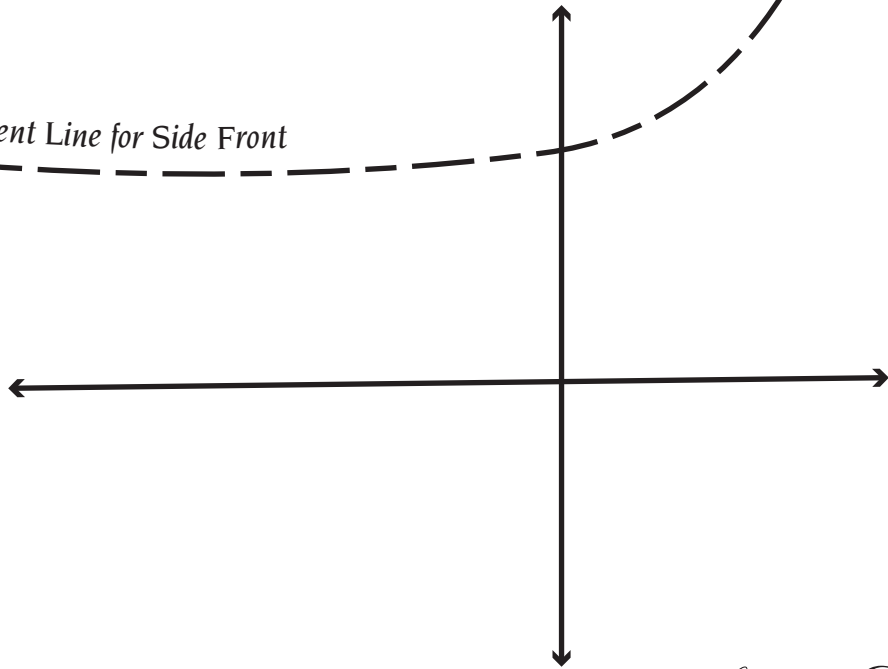
*Sporty Details
Sampler*
by **Fit for Art Patterns™**

©2017 Tabula Rasa Patterns, LLC.

Side Pocket

Cut 2 in Cotton

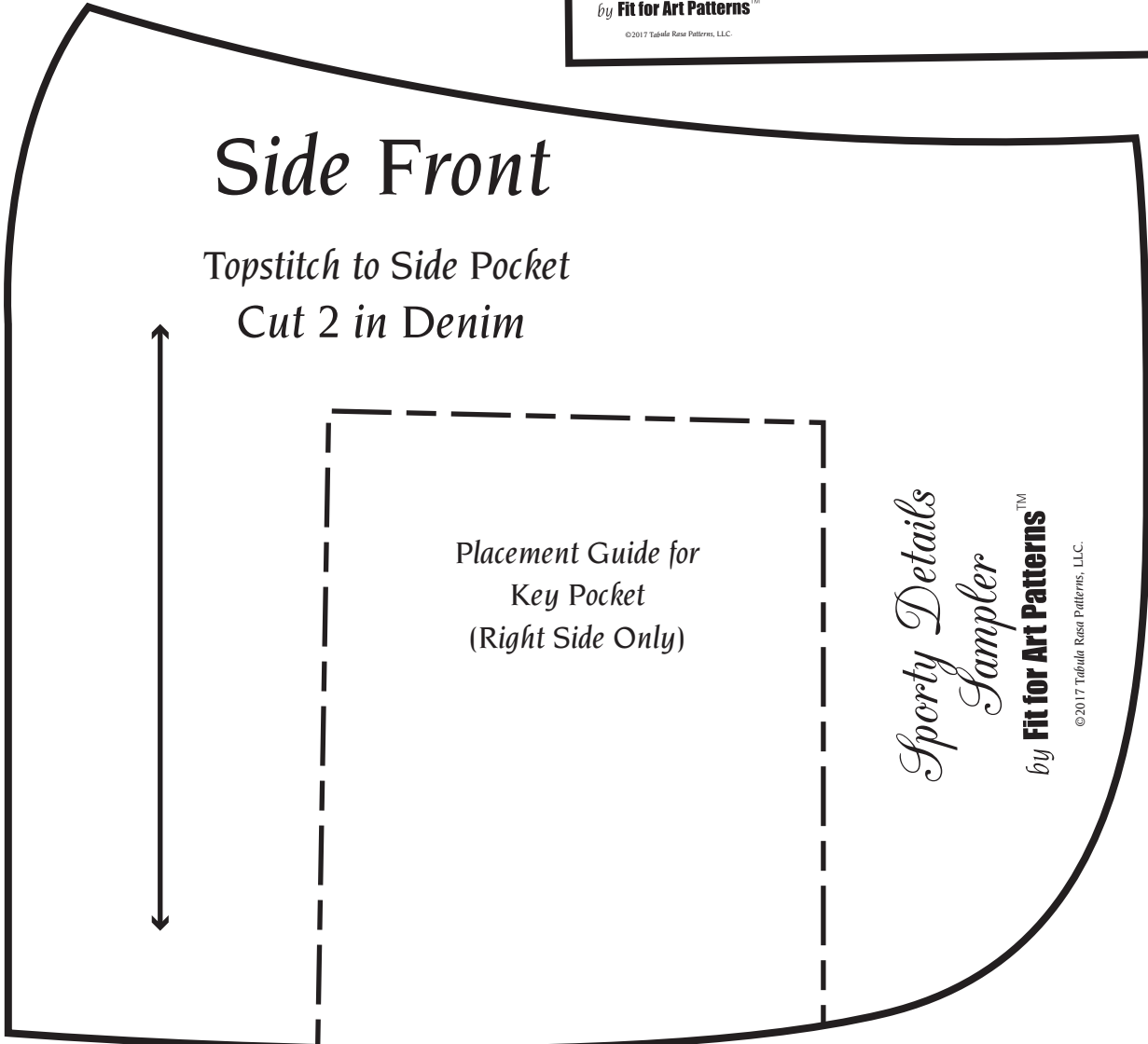
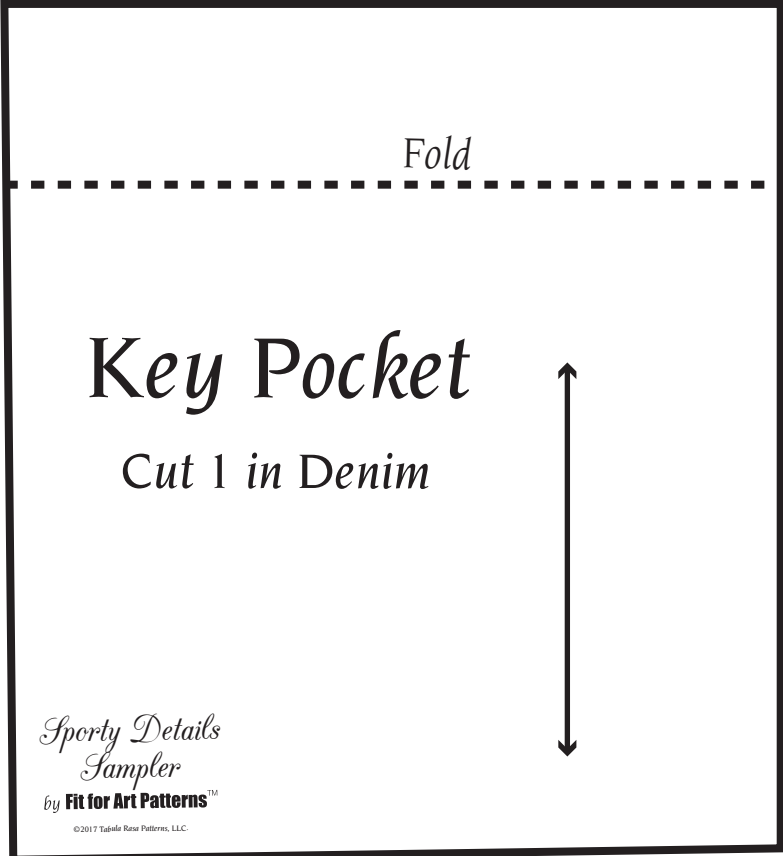
Placement Line for Side Front



*Sporty Details
Sampler*

by **Fit for Art Patterns™**

©2017 Tabula Rasa Patterns, LLC.





Front
Cut 2 in Denim

Connect Patterns Here

Connect Patterns Here

*Sporty Details
Sampler*
by **Fit for Art Patterns™**

©2017 Tabula Rasa Patterns, LLC.

Connect Patterns Here

Connect to
Front

Baste

Back
Stitch

Stitch

*Sporty Details
Sampler*

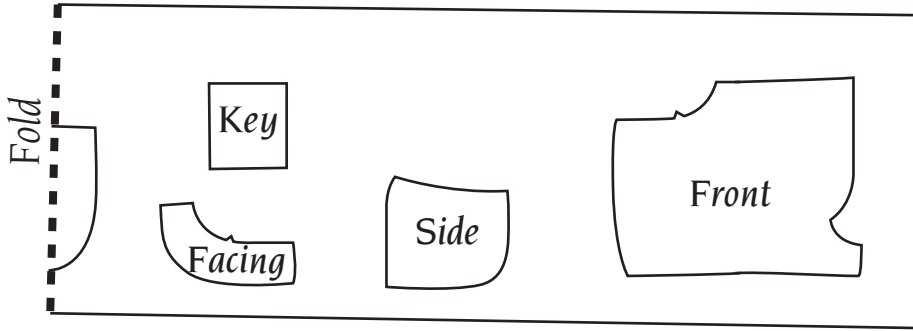
by **Fit for Art Patterns™**

©2017 Tabula Rasa Patterns, LLC.

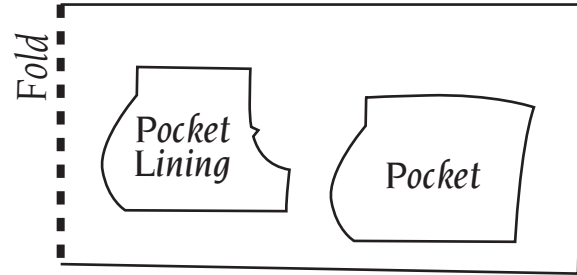
Connect Patterns Here

Suggested Layout

DENIM



COTTON



Fly Guard

Eureka! Pants Sporty Details

Cut 1 on Fold in Denim

Fold

*Sporty Details
Sampler*
by **Fit for Art Patterns™**

©2017 Tabula Rasa Patterns, LLC.

Pocket Lining Facing

Eureka! Pants Sporty Details

Cut 2 in Denim

*Sporty Details
Sampler*
by **Fit for Art Patterns™**

©2017 Tabula Rasa Patterns, LLC.