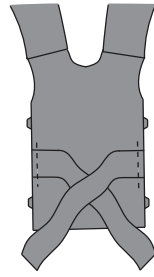


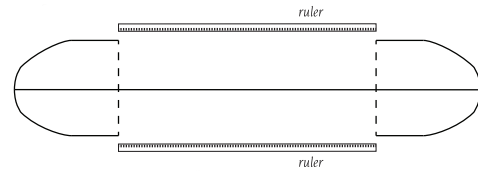
Attach sash to jacket: At Step 2 of the Tabula Rasa Jacket Instructions, pin the open end of one sash to each side of the back. The placement should straddle the location you marked while measuring your waist. If the sash is 4 or more inches wide, fold a pleat in the center of the sash to reduce the width where the sash meets the jacket. Try on the jacket, even though it is not finished, and carefully wrap the belt around your waist to test the length and placement. Adjust the sash length or placement if desired, then stitch sashes securely to back before continuing with jacket construction.



OBI BELT

Calculate the length of your belt by subtracting 4" from the waist measurement. The belt should wrap most of the way around your body. You will add ties that cross around the back and tie in the front.

Prepare pattern: On a large piece of pattern paper or tissue, draw a line the calculated length of the belt. Position the grainline of one end of the Obi Belt template at one end of the grainline you just drew on the paper. Trace the template onto your pattern paper then repeat, tracing the other side of the template on the other end of the grainline. Use a ruler to connect the template pieces at the top and bottom of the pattern.

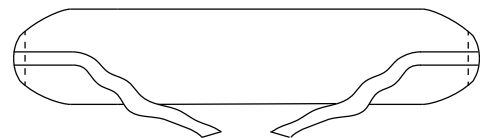


Cut out belt: Using the pattern, cut 2 belt pieces from your fabric and 2 from fusible interfacing. Fuse an interfacing piece to the wrong side of each belt. If embellishing the belt, complete that work before assembling the belt.

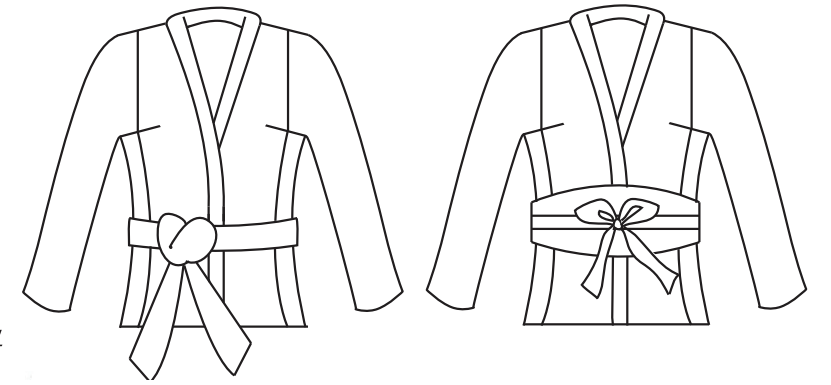
Prepare ties: Use the waist measurement as the length for the 2 ties for the belt. Make the ties with ribbon or purchased trim, or use fabric to make ties as follows. Cut two rectangles of fabric for the ties that are 2¼" wide by the length of your waist measurement. Fold the fabric strips in half, right sides together, and sew into a tube along the long side. Grade the seam allowances and turn the tubes right side out with a tube turner or safety pin. Press the ties flat.

Assemble Obi Belt:

- Pin one end of each tie to each narrow end of one belt piece, right sides together. Try on the belt to assess the size and the length of the belt and ties. Adjust if desired. When you are satisfied, stitch the ties securely in place.
- Fold up the tie ends and safety pin them onto the belt, out of the way so you can easily complete the belt.
- Place the second belt piece on top of the belt piece with the ties, right sides together. Pin and then stitch all around the belt, leaving a 2 to 3" opening along one side of the belt for easy turning.
- Grade the seam allowances and turn the belt right side out. Press flat and close the opening with hand stitches.
- Unpin the tie ends. Finish the raw end of each tie with a knot, some beaded accents, or by hand stitching them neatly closed.



Wrap It Up! Tabula Rasa Jacket



Follow these directions to define the waist of your Tabula Rasa Jacket with either an obi style belt or an attached sash that crosses around the back and ties in front to cinch the jacket.

Begin by putting on your mock-up and measuring around your body at your favorite location for the belt. You will use this measurement, which we will refer to as the waist measurement, to calculate the length of the pieces to cut for your belt. If you are making the attached sash, place a pin or mark at each side seam on the back of your mock-up where the tape measure sits on the jacket. You will use this mark to place the sash in the back side seams of your Tabula Rasa Jacket. All seam allowances are 5/8" unless otherwise directed.

ATTACHED SASH

Prepare sash pieces: Cut two sash pieces, on the straight of grain, using the following length and width calculations.

Length: The attached sash can either knot neatly or tie into a dramatic bow. For a knotted sash, use the waist measurement as the length for each sash. If you want to tie the sash into a bow, add 8" to the waist measurement for the length of each sash. This will give you a generously long sash with squared off ends.

Width: The sash can be as wide or narrow as you prefer. As a general rule, the softer the fabric, the wider the sash can comfortably be. Cut the fabric 1¼" plus twice the width of the finished sash. So, for example:

- For a 2" wide sash, cut the fabric 5¼" wide;
- For a 3" wide sash, cut the fabric 7¼" wide;
- For a 4" wide sash, cut the fabric 9¼" wide.

Sew each sash: Begin by placing a safety pin supported with some scrap fabric near one end of each sash, inside the 5/8" seam allowance. Fold each sash in half, right sides together and stitch each sash into a tube. Stitch along the long side and the short end with the safety pin, being careful not to stitch into the safety pin. Clip the corners. Use the safety pin to gently pull the sash right side out. Remove the pin and scrap fabric support. Press each sash flat.

Obi Belt Template

Use this template to create your own Obi Belt pattern for the Tabula Rasa Jacket.

Cut two of fabric.

Cut two of interfacing.

