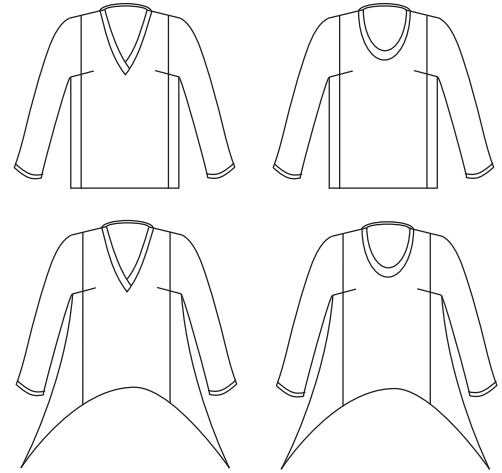


Common Fitting Adjustments for the Tabula Rasa Knit Tee & Tunic



Here we provide instructions and illustrations for making the most commonly needed fitting adjustments on the Tabula Rasa Tee & Tunic. Entries are organized according to the “symptom” you will see on your top. For each entry, you will find a typical “diagnosis” for that symptom and a prescription for fixing it on your mock-up, followed by directions for transferring the adjustments to your paper pattern. It is very important to follow through with making the adjustments directly onto your paper pattern so that your next Tabula Rasa Knit will fit just as you like! If you find that you need an adjustment not included here, please contact us with your question and we’ll do our best to help you.

TABLE OF CONTENTS

Bust and Back Adjustments	2
<i>Center Front Curves Upward • Center Back Curves Upward</i>	
Overall Jacket Adjustments.	3
<i>Petite Adjustments</i>	

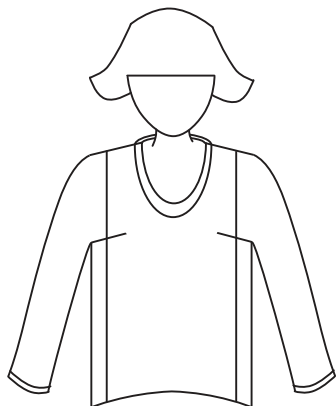
Bust and Back Adjustments



interfacing

..... fold line

CENTER FRONT CURVES UPWARD

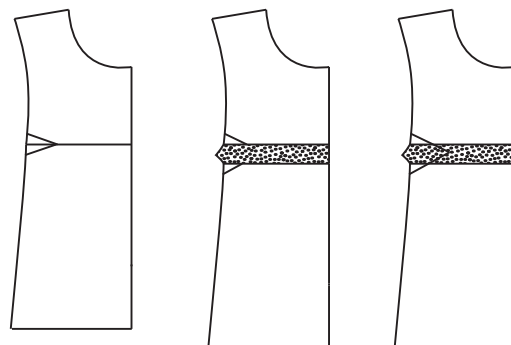


If the Center front of the Tee curves upward and you are using the AB front, move up to the CD front to provide more space for your bust. If you are already using the CD front, follow the instructions below to adjust the paper pattern for better fitting knit tops.

Put on your Tabula Rasa Tee and observe how much it curves up in the front. This will be the width of your adjustment. It is easier to see this on the Tee since the Tunic is designed to curve up a bit in the front.

On the front pattern piece:

- Draw a line through the dart, perpendicular to the fold line.
- Cut along this line and tape in a strip of pattern paper the width of the adjustment.
- Redraw the dart to accommodate the extra paper.

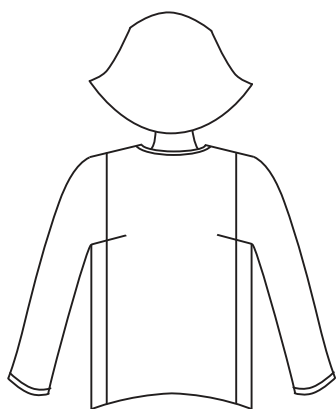


If you still need additional space for a full bust:

- Draw an additional line 1-1 1/2" below the dart and repeat the paper addition creating space for a second dart.
- Make the dart in this space the same length as the dart above it.



CENTER BACK CURVES UPWARD



If the center back curves up or the Tee is always shifting toward the back, make a rounded back adjustment. (illus 6) (This adjustment works for knits, but it is not a successful alteration in woven fabrics. See *Common Fitting Adjustments* for the Tabula Rasa Jacket for woven directions.)

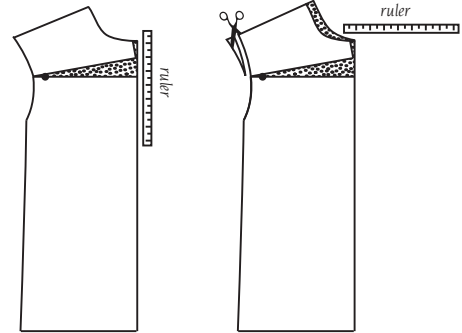
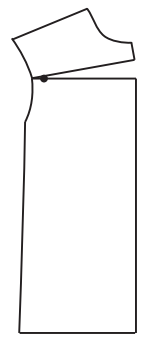
Put on your Tabula Rasa Tee or Tunic and observe how much it curves up in the center back. This will be the width of your adjustment.

On the back pattern piece:

- Draw a line perpendicular to the fold line and 2-3" down the fold line from the neck edge.
- Mark the 5/8" seam allowance on this line at the armhole.



- Cut along this line beginning at the fold line and ending at the seam allowance mark. Spread the pattern the width of the adjustment at the center back. Tape in a piece of pattern paper to fill the gap.
- Tape some paper above this adjustment to allow the re-establishment of a straight fold line. Lay a long ruler against the fold line below the adjustment and extend it up into the paper added into the neck. Lengthen the curved neck line so it connects with the new fold line.
- Measure the amount you filled into the neck at the fold line. Tape a piece of pattern paper at the shoulder area of the neck curve. Extend the shoulder line at the neck curve and redraw the neck curve to accommodate this addition.
- Reduce the shoulder seam the same amount at the shoulder point of the sleeve seam and blend the line into the back armhole to accommodate the adjustment. Cut away the extra pattern paper.



Overall Jacket Adjustments

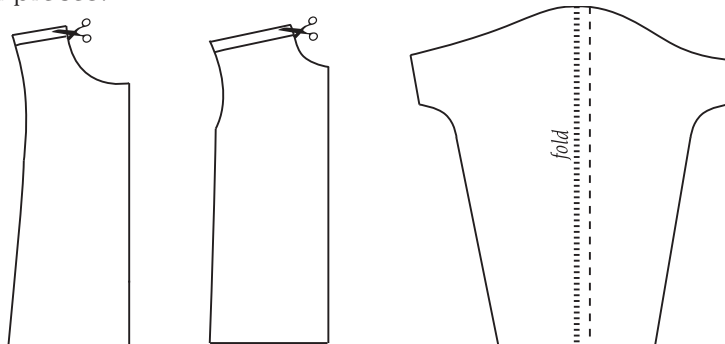
PETITE ADJUSTMENT

If the upper body and sleeves feel too long and full and/or if the dart is too low, pin out the excess fabric in the shoulders and continue pinning out the same amount all the way down each sleeve. Test whether you can still move your arms easily before continuing. Measure the amount of the adjustment you will make on both the front and back pattern pieces and the sleeve. If the amount is $\frac{5}{8}$ " or less, use the Petite 1 method of pattern adjustment. If the amount is $\frac{3}{4}$ " or more, use the Petite 2 method of pattern adjustment.

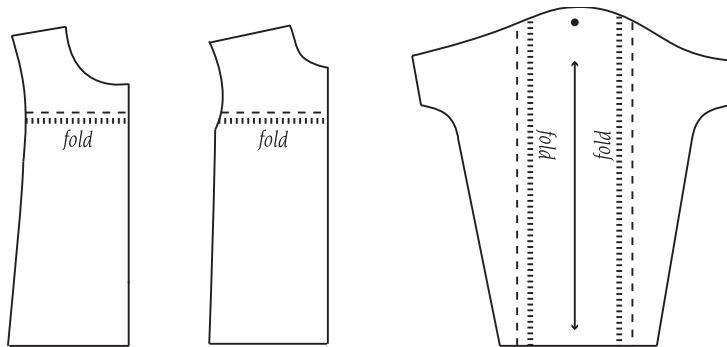
Petite 1 – On the pattern pieces:

- Mark the amount that needs to be taken away at the neck and shoulder and draw a new shoulder line. Do this on both the front and back pattern pieces. Trim off the extra paper.
- On the sleeve pattern, fold along the grainline, folding out the same amount you have taken off the shoulder (e.g. If you reduced each shoulder by $\frac{1}{2}$ ", reduce the sleeve with a $\frac{1}{2}$ " fold). Tape the fold into place.

Petite 2 – On the pattern pieces:



- Draw a line 2-3" down from the shoulder and perpendicular to the fold line on both the front and back pattern pieces.
- Fold out half of the amount of the adjustment (e.g. If your reduction is 1" fold out ½" on both the front and back).
- Use a fashion ruler to redraw the pattern smoothly at the armholes.
- On the sleeve pattern, draw new lines 2" away from but parallel to the grainline on each side of the sleeve. Fold along each of these lines, folding out the same amount you folded out the front and back pattern pieces.



Contact us at info@fitforartpatterns.com if you have other fitting questions regarding your Tabula Rasa Knit pattern.